



# Standard Specifications

## BXP135X-A

1st ed. 16-Feb-21

Kawasaki Heavy Industries, Ltd.  
Robot Business Division

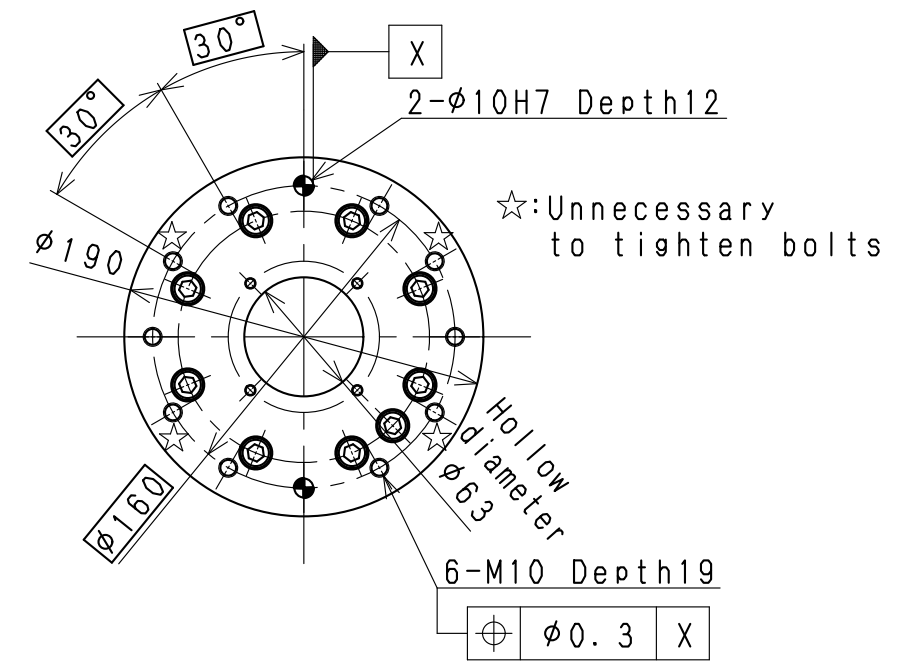
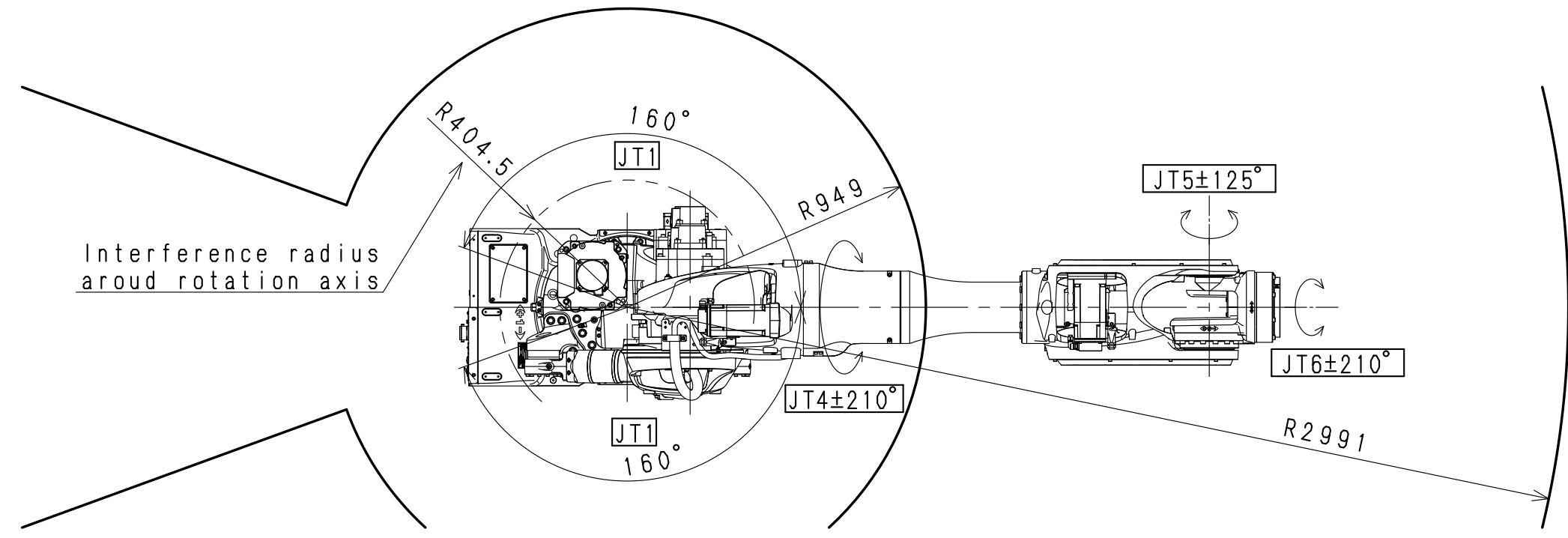
Specification number : 90151-0356DEA

Materials and specifications are subject to change without notice.

## Robot specifications

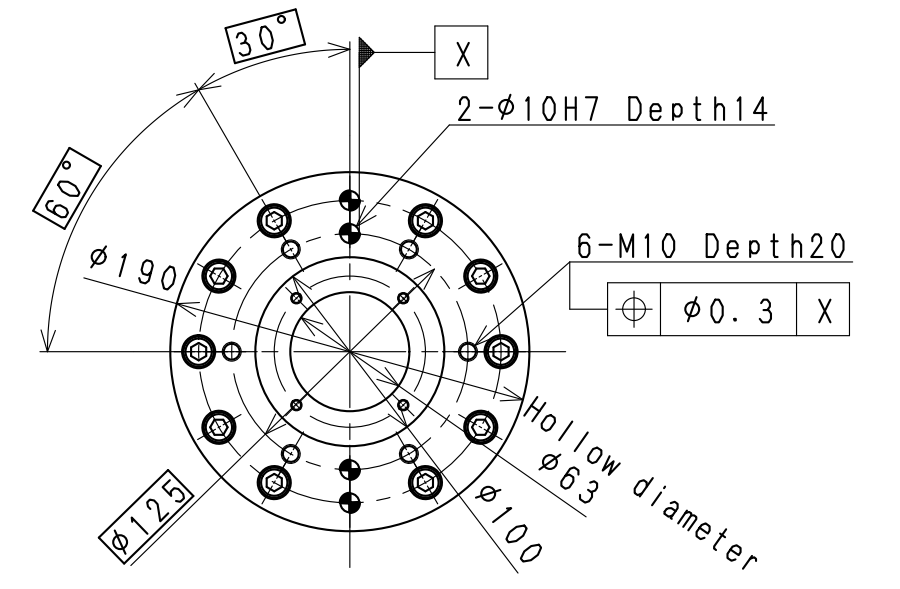
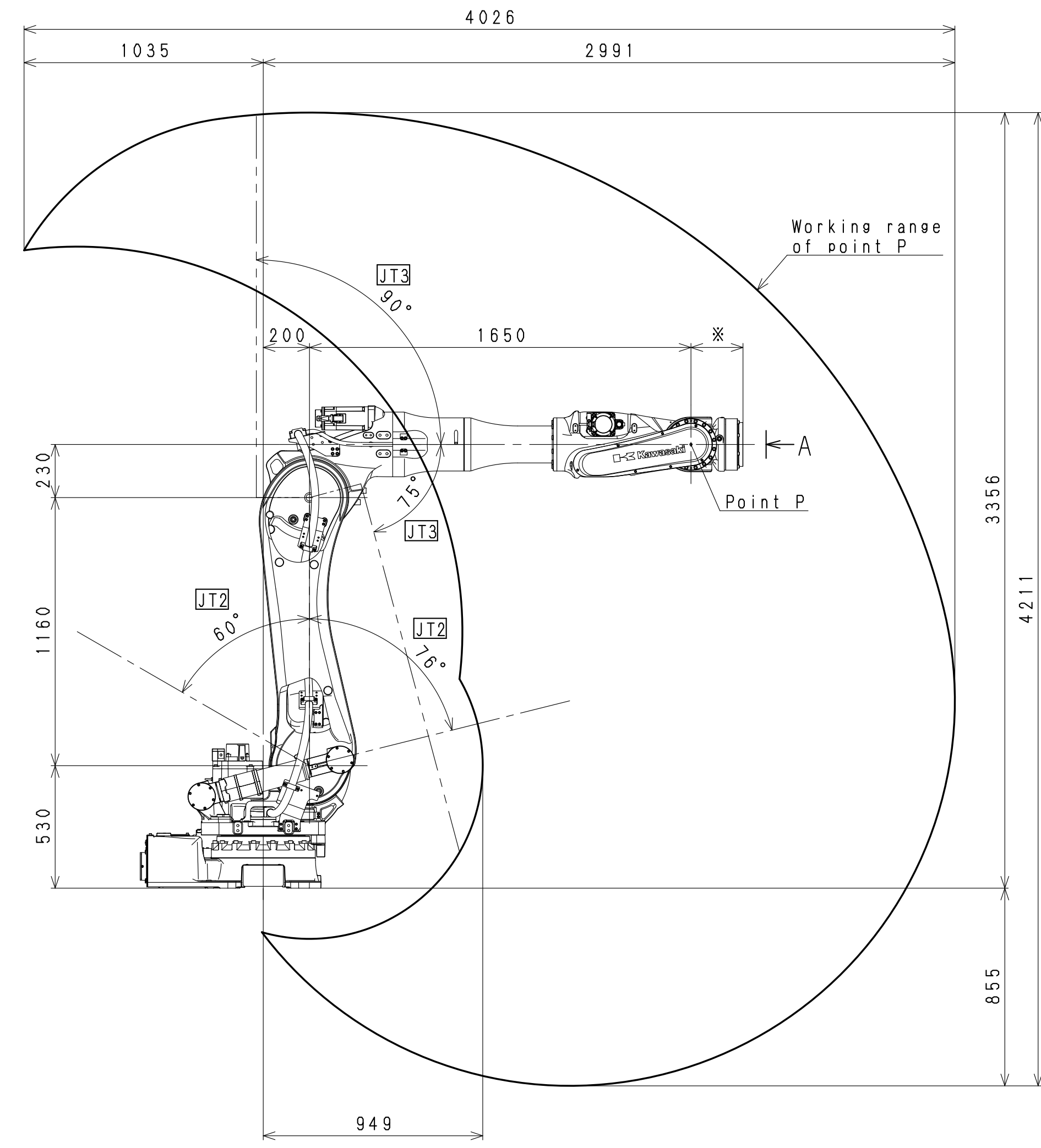
1. Model	BXP135X-A																						
2. Type	Articulated robot																						
3. Degree of freedom	6 axes (Option 7 axes)																						
4. Max. payload	135 kg																						
5. Max. reach	2,991 mm																						
6. Position repeatability	±0.06 mm (wrist flange surface) conforms to ISO 9283																						
7. Axis specification	<table border="1"> <thead> <tr> <th>Operating axis</th> <th>Motion range</th> <th>Max. speed</th> </tr> </thead> <tbody> <tr> <td>Arm rotation (JT1)</td> <td>±160 °</td> <td>140 °/s</td> </tr> <tr> <td>Arm out-in (JT2)</td> <td>+76 ° - -60 °</td> <td>105 °/s</td> </tr> <tr> <td>Arm up-down (JT3)</td> <td>+90 ° - -75 °</td> <td>140 °/s</td> </tr> <tr> <td>Wrist swivel (JT4)</td> <td>±210 °</td> <td>220 °/s</td> </tr> <tr> <td>Wrist bend (JT5)</td> <td>±125 °</td> <td>200 °/s</td> </tr> <tr> <td>Wrist twist (JT6)</td> <td>±210 °</td> <td>300 °/s</td> </tr> </tbody> </table>		Operating axis	Motion range	Max. speed	Arm rotation (JT1)	±160 °	140 °/s	Arm out-in (JT2)	+76 ° - -60 °	105 °/s	Arm up-down (JT3)	+90 ° - -75 °	140 °/s	Wrist swivel (JT4)	±210 °	220 °/s	Wrist bend (JT5)	±125 °	200 °/s	Wrist twist (JT6)	±210 °	300 °/s
Operating axis	Motion range	Max. speed																					
Arm rotation (JT1)	±160 °	140 °/s																					
Arm out-in (JT2)	+76 ° - -60 °	105 °/s																					
Arm up-down (JT3)	+90 ° - -75 °	140 °/s																					
Wrist swivel (JT4)	±210 °	220 °/s																					
Wrist bend (JT5)	±125 °	200 °/s																					
Wrist twist (JT6)	±210 °	300 °/s																					
8. Load capacity of wrist	<table border="1"> <thead> <tr> <th></th> <th>Max. torque</th> <th>Moment of inertia*</th> </tr> </thead> <tbody> <tr> <td>JT4</td> <td>855 N·m</td> <td>90 kg·m<sup>2</sup></td> </tr> <tr> <td>JT5</td> <td>855 N·m</td> <td>90 kg·m<sup>2</sup></td> </tr> <tr> <td>JT6</td> <td>445 N·m</td> <td>50 kg·m<sup>2</sup></td> </tr> </tbody> </table> <p>Note* Each value in this table shows allowable moment of inertia of JT4/JT5/JT6 when max. allowed torque is applied to each axis. If more detailed data is required for your application, please contact Kawasaki.</p>			Max. torque	Moment of inertia*	JT4	855 N·m	90 kg·m <sup>2</sup>	JT5	855 N·m	90 kg·m <sup>2</sup>	JT6	445 N·m	50 kg·m <sup>2</sup>									
	Max. torque	Moment of inertia*																					
JT4	855 N·m	90 kg·m <sup>2</sup>																					
JT5	855 N·m	90 kg·m <sup>2</sup>																					
JT6	445 N·m	50 kg·m <sup>2</sup>																					
9. Mass	880 kg (without options)																						
10. Mounting	Floor mounting																						
11. Installation Environment	Ambient Temperature: 0 - 45 °C																						
	Relative Humidity: 35 - 85 % (with no dew condensation)																						
12. Color	Munsell 10GY9/1 equivalent																						
13. Degree of protection	Wrist: IP67 equivalent, Arm: IP54 equivalent																						
14. Dressing	Cable length between flange and tool is 1.5m. Consult Kawasaki when non-standard dressing will be applied.																						
15. Options	Mechanical stopper	Adjustable stoppers JT1/JT2/JT3																					
	Adapter bracket	between flange and tool																					

Consult Kawasaki about maintenance parts and spare parts.



STANDARD FLANGE

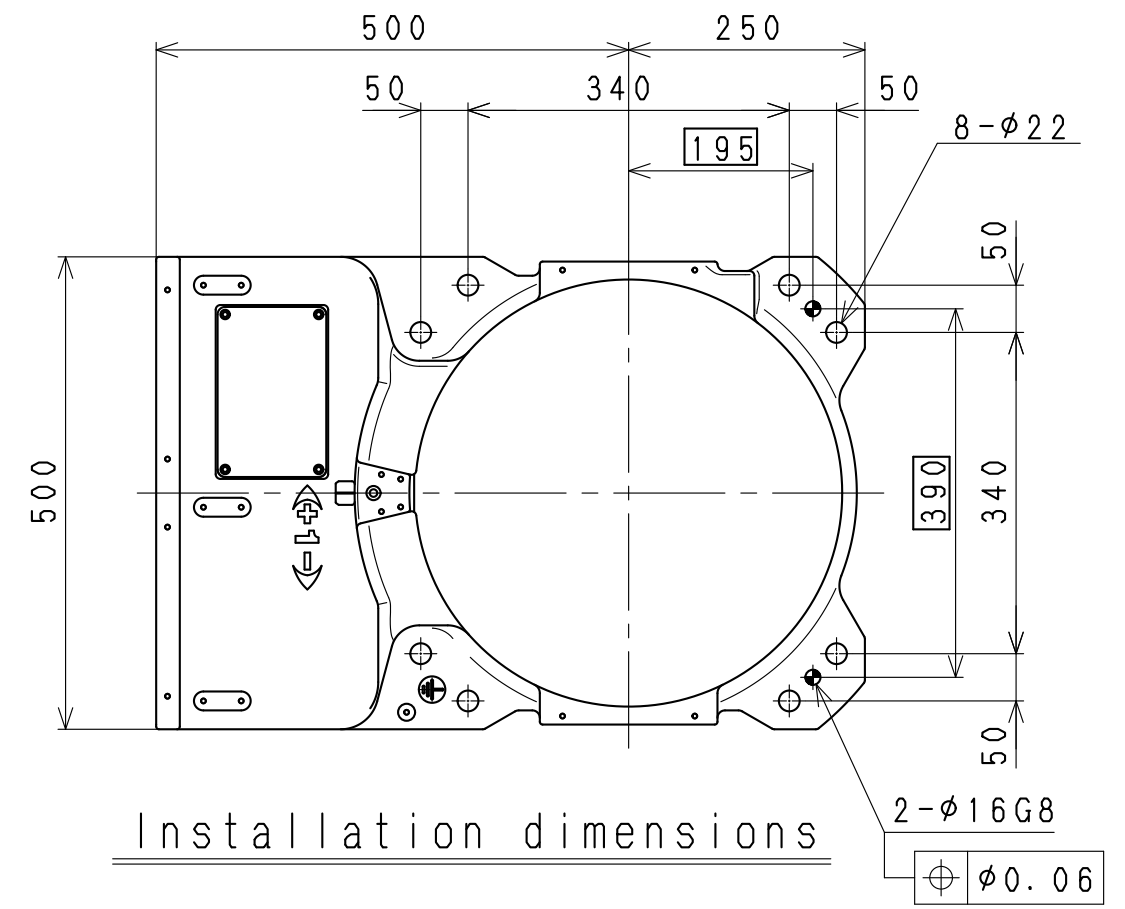
※ Dimension:225



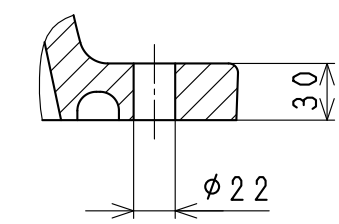
OPTION FLANGE

※ Dimension:245

View A



Installation dimensions



BXP135X  
WORKING RANGE