



Robotmaster

Home

View Screen Capture

Object Point

Robot Cell Robot Tooling

Tool Frames

Stock Fixture Part

Workspace

Path Point Vector

Calculate

Add Process Definition Remove Process Definition Process Definition

Copy Paste Remove All

Reset All

Reset Pose

3D PDF

Operation 1

Points List Repose

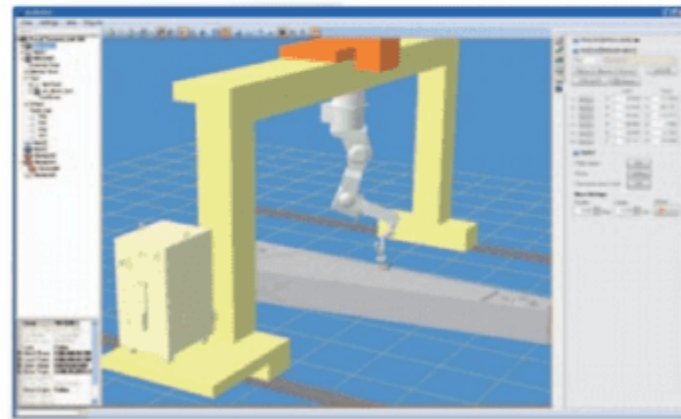
#	CE	PE	Pose
J	J1=0 J2=0 J3=0 J4=0 J5=0 J6=0	E1=	
P0	L X=5754.54, Y=125.1, Z=152.16	Rz=90.05, F	
P1	L X=5754.57, Y=93.67, Z=197.3	Rz=90.05, Ry	
P2	L X=5754.57, Y=90.82, Z=201.4	Rz=90.05, Ry	
P3	L X=5755.36, Y=92.75, Z=202.78	Rz=90.05, F	
P4	L X=5756.14, Y=94.67, Z=204.17	Rz=90.05, F	
P5	L X=5756.92, Y=96.57, Z=205.59	Rz=90.05, F	
P6	L X=5757.69, Y=98.45, Z=207.05	Rz=90.05, F	
P7	L X=5758.47, Y=100.31, Z=208.54	Rz=90.05	
P8	L X=5759.24, Y=102.14, Z=210.05	Rz=90.05	
P9	L X=5760.01, Y=103.96, Z=211.59	Rz=90.05	
P10	L X=5760.78, Y=105.75, Z=213.15	Rz=90.05	
P11	L X=5761.54, Y=107.52, Z=214.74	Rz=90.05	
P12	L X=5762.3, Y=109.27, Z=216.36	Rz=90.05, F	

Joints Frames Process

E1	-4754.648	-5800	5800
E2	695.000	-470	695
J1	89.782	-180	180
J2	-15.099	-105	145
J3	-112.228	-163	150
J4	-180.000	-270	270

ОФФ-ЛАЙН СИМУЛЯТОР

программное обеспечение для оффлайн-программирования роботов Kawasaki. Программа позволяет использовать 3D модели роботов и оборудования для создания виртуальной робототехнической ячейки и предоставляет широкие возможности для программирования и симуляции



ЧТО ТАКОЕ K-ROSET

K-ROSET



SeparateControl - K-ROSET

View Settings Help Plug-ins

Start Page Layout

- SeparateControl
 - Obstacle2
 - Obstacle4
 - Obstacle13
 - Obstacle6
 - Obstacle7
 - Obstacle1
 - Obstacle3
 - Obstacle5
 - RO1[C01]
 - External Axis
 - J7
 - J8
 - Work2
 - Internal Axis
 - Tool
 - Others
 - TrackLine
 - TableBase1
 - TableBase2
 - Recycle Bin

Name: Obstacle
Entity: Env-Model
Color: 173
Size: 255
Lock: False
Id: 1000.001

Quick Settings

Repeat Motor Cycle Error Reset EMG

Program Name: Pg100

Show Monitor...
Synchronize...
Hide Pendant
Temporary Folder...

RO1[C01] - Virtual Teach Pendant 0

REPEAT Program [Comment] STEP FC RUN MOTOR CYCLE

[a] 100 [1] 1 autoet

Aux. REP. SPD 100%

STEP CONT. MAN. SPEED

REP. CONT. Lv2

Cleared error state.

Ina.	Intr.	No.	Seq.	Acc.	Tar.	J/E	[Option Switch]
AC	JOINT	9	4	0			

1 SPEED 30 ALWAYS

2 JMOVE #FPOINT(45, -45, -20, 0e+00, -50, 0e+00, 0e+00, 0e+00)

3 W1SET 1 = 60, 200, 24, 0, 0

4 W2SET 1 = 1, 150, 18

5 JMOVE #FPOINT(82.15, -14.09, -41.44, 193.73, -27.02, -190.61, -70, 0e+00)

6 LMOVE #FPOINT(82.15, -14.09, -41.44, 193.73, -27.02, -190.61, -70, 0e+00)

7 ARC ON

ERR CLR REP CYC MTR EMG

RPS OFF Monitor1 Monitor2 Arc Monitor Step Forward

Record I/O Monitor Real Time Condition W. Inching Speed 1



ЧТО ТАКОЕ K-ROSET

Ссылка на программу:

<http://ftp.kawasakirobot.de/files/public/Software/K-Roset/Ver.1.8.2.17253.001.zip>

ДЛЯ УСТАНОВКИ НЕОБХОДИМО
ИСПОЛЬЗОВАТЬ ФАЙЛ **SETUP.EXE**

В противном случае дополнительные зависимости не будут установлены, что приведёт к неправильной работе программы.



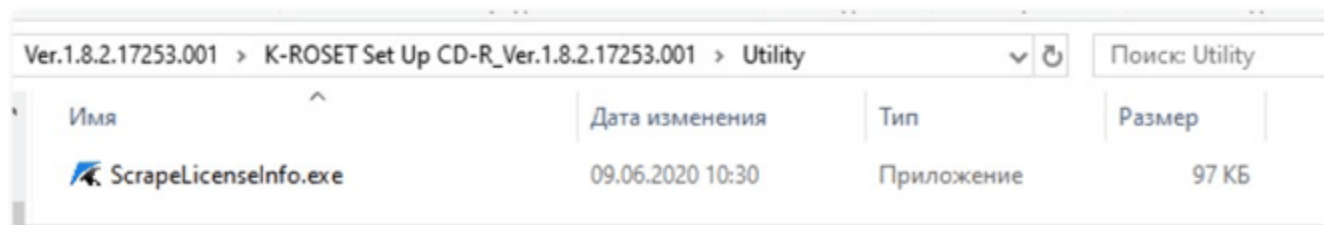
Ver.1.8.2.17253.001 > K-ROSET Set Up CD-R_Ver.1.8.2.17253.001

Поиск: K-ROSET Set Up CD-R.

Имя	Дата изменения	Тип	Размер
AdobeReader	09.06.2020 10:28	Папка с файлами	
Custom	09.06.2020 10:29	Папка с файлами	
Documents	09.06.2020 10:29	Папка с файлами	
Driver	09.06.2020 10:29	Папка с файлами	
ISSetupPrerequisites	09.06.2020 10:30	Папка с файлами	
Script	09.06.2020 10:30	Папка с файлами	
Utility	09.06.2020 10:30	Папка с файлами	
0x0409.ini	09.06.2020 10:26	Параметры конф...	22 КБ
0x0411.ini	09.06.2020 10:26	Параметры конф...	15 КБ
1033.mst	09.06.2020 10:26	Файл "MST"	46 КБ
1041.mst	09.06.2020 10:26	Файл "MST"	136 КБ
Autorun.inf	09.06.2020 10:26	Сведения для уст...	1 КБ
Data1.cab	09.06.2020 10:28	CAB-файл	816 629 КБ
InstallSplash.bmp	09.06.2020 10:28	Файл "BMP"	507 КБ
K-ROSET.msi	09.06.2020 10:28	Пакет установщи...	5 274 КБ
setup.exe	09.06.2020 10:28	Приложение	1 456 КБ
Setup.ini	09.06.2020 10:28	Параметры конф...	9 КБ
WindowsInstaller-KB893803-x86.exe	09.06.2020 10:28	Приложение	2 525 КБ

Скачивание и установка программы

ТИП ЛИЦЕНЗИИ	ЛИЦЕНЗИОННЫЙ КЛЮЧ	ФУНКЦИОНАЛ
Стандартная	USB-ключ	Полный функционал программы
Пробная версия	Файл	Полный функционал на 2 месяца
Lite	-	Базовый функционал



Виды лицензий. Получение полной версии.



K-ROSET



The screenshot displays the K-ROSET Lite software interface. At the top left, the title bar reads "webinar - K-ROSET Lite". Below it are menu options: View, Settings, Help, Plug-ins. A toolbar with various icons is positioned below the menu. On the left side, there is a "Start Page" and "Layout" section with a tree view containing items like "webinar", "RS005L[C01]", "Table", "Brick 1", "Brick 2", "Brick 3", "Brick 4", "Pick zone", "Place zone", and "Recycle Bin". Below this tree is a metadata section with fields for "Project Name" (webinar), "Protect" (False), and "Version" (1.0.2.17253). The central area is a 3D simulation of a white robotic arm with a yellow gripper, positioned over a yellow base with a red line. The background is a light blue gradient. On the right side, there is an "Option" panel with settings for "Click teach" (OFF), "Home" (Setting), "Axes limit" (On), "Cooperation" (Setting, Enable), and "Move Settings" (Rotate: 5.00 deg, Linear: 10.0 mm, Speed, Floating). Below the options is a dropdown menu showing "RS005L[C01][RS005L-A001]". At the bottom of the interface, there is a "Quick Settings" section for "RS005L[C01]" with buttons for "Best", "Motor", "Cycle", "Error", "Reset", and "EMG". It also includes a "Program Name" dropdown, a "Load..." button, and a play button. To the right of these are buttons for "Show Monitor...", "Synchronize...", "Show Pendant", and "Temporary Folder...".

Внешний вид программы

The screenshot displays the Robowizard software interface. At the top, there's a menu bar with 'View', 'Settings', 'Help', and 'Plug-ins'. Below it, a 'Start Page' tab is active, showing a tree view of the project structure including 'webinar', 'RS005L[C01]', 'Table', and various 'Brick' components. The main workspace is a large blue area. Overlaid on this is a virtual teach pendant with a keypad and directional buttons. Below the workspace, there's a 'Quick Settings' panel with buttons for 'Repeat', 'Motor', 'Cycle', 'Error', 'Reset', and 'EMG', along with a 'Program Name' field and a 'Load' button. At the bottom, there are buttons for 'Show Monitor...', 'Synchronize...', 'Hide Pendant', and 'Temporary Folder...'. The central part of the interface shows a code editor with a table of program data:

Program	Comment	STEP	PC	RUN	MOTOR	CYCLE
[]	[]	[]	[]	[]	[]	[]
INTERP SPD ACC THR TOOL CLAMP J/E	OUTPUT	INPUT				18:51
JOINT 9	1	0	1			
[BOF]						

The settings panel is titled 'Option' and includes several configuration options:

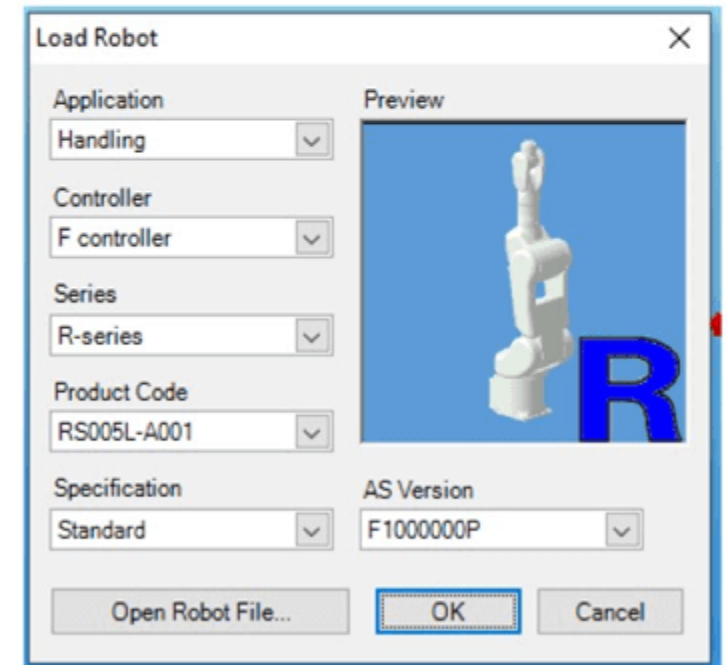
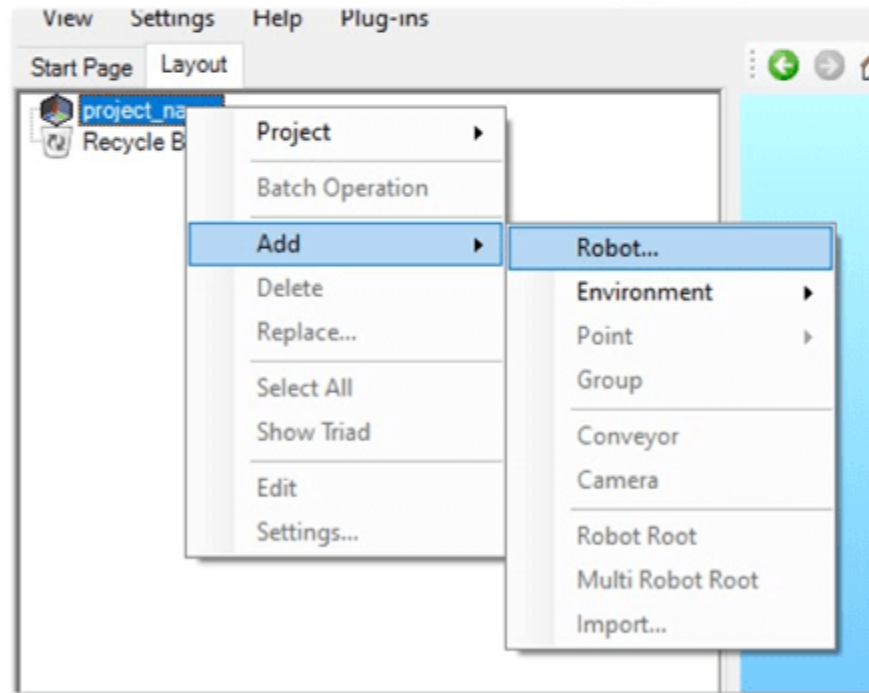
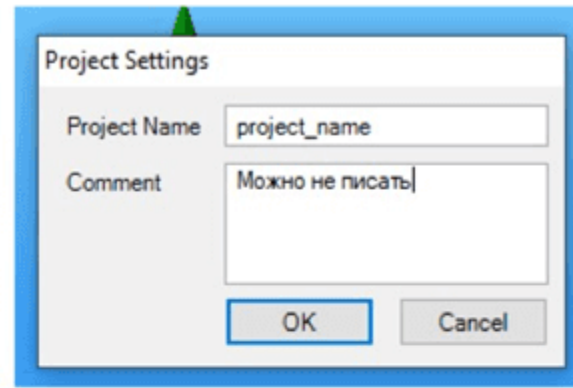
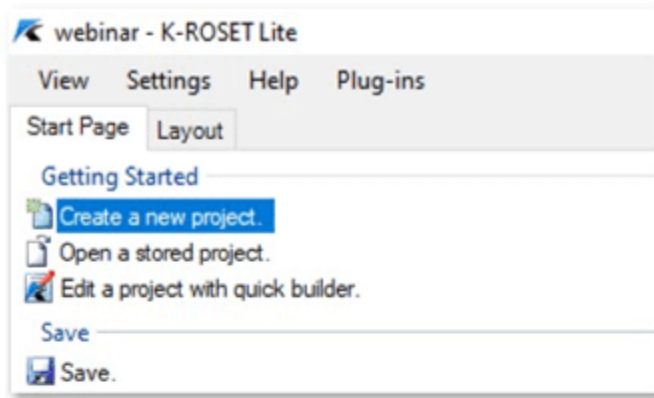
- Click teach: Off
- Home: Setting
- Axes limit: On
- Cooperation: Setting Enable
- Move Settings:
 - Rotate: 5,00 deg
 - Linear: 10,0 mm
 - Speed: [Slider]
- Floating: [Button]

Below this, there's a section for 'RS005L[C01][RS005L-A001]' with a 'Joint' dropdown set to 'Brick 1'. It includes buttons for 'Righty', 'Above', 'Dwrist', and '1HOME'. There are also 'Add point' and 'Gauge' buttons.

	Joint	Trans
J1 < >	100 -1,751	X -18,500
J2 < >	100 34,477	Y 604,995
J3 < >	100 -113,513	Z -169,997
J4 < >	100 0,000	O 91,748
J5 < >	100 -32,010	A 179,999
J6 < >	100 1,751	T -88,253



Внешний вид программы



Создание проекта



K-ROSET

R01[C01] - Virtual Teach Pendant 0

TEACH [Program] [Comment] STEP PC RUN MOTOR CYCLE

Aux. REP. SPD 100% MAN. SPEED 2.0

Lv2 JOINT

INTERP	SPD	ACC	TMR	TOOL	CLAMP	J/E	OUTPUT	INPUT
JOINT	9	1	0	1				

[EOF]

ERROR AUTO CHK once Waiting EXT. HOLD RPS OFF

Monitor1 Monitor2 J/E

Record I/O Monitor Tool 1 Manual Output

ERR ERE TCH CYC MTR EMG

Kawasaki CONTROLLER

↑ ↓ ← →

MENU HELP TEACH SPEED INTERP

GO CHECK BACK

INS DEL

AUX MOD O.WRITE REC POS MOD

CL1 CL2 CLn

CLOSE SPEED ACC TIMER TOOL

RUN HOLD 7 0 8 E 9 F BS

ON OFF CLAUX WORK

1 2 3 KIn

0 . ↩ J/E I

1 X 2 Y 3 Z 4 FX 5 FY 6 FZ 7

ENTER R A



Виртуальный пульта управления роботом